

# Developmental Disorders of the Dentition: An Update

**OPHIR D. KLEIN, SNEHLATA OBEROI, ANN HUYSEUNE, MARIA HOVORAKOVA, MIROSLAV PETERKA, AND RENATA PETERKOVA**

Dental anomalies are common congenital malformations that can occur either as isolated findings or as part of a syndrome. This review focuses on genetic causes of abnormal tooth development and the implications of these abnormalities for clinical care. As an introduction, we describe general insights into the genetics of tooth development obtained from mouse and zebrafish models. This is followed by a discussion of isolated as well as syndromic tooth agenesis, including Van der Woude syndrome (VWS), ectodermal dysplasias (EDs), oral-facial-digital (OFD) syndrome type I, Rieger syndrome, holoprosencephaly, and tooth anomalies associated with cleft lip and palate. Next, we review delayed formation and eruption of teeth, as well as abnormalities in tooth size, shape, and form. Finally, isolated and syndromic causes of supernumerary teeth are considered, including cleidocranial dysplasia and Gardner syndrome. © 2013 Wiley Periodicals, Inc.

**KEY WORDS:** mouse; zebrafish; teeth; hypodontia; supernumerary teeth; craniofacial; syndrome

**How to cite this article: Klein OD, Oberoi S, Huysseune A, Hovorakova M, Peterka M, Peterkova R. 2013. Developmental disorders of the dentition: An update. *Am J Med Genet Part C Semin Med Genet* 163C:318–332.**

## INTRODUCTION

Genetic causes have been identified for both isolated tooth malformations and for the dental anomalies seen in patients

with craniofacial developmental abnormalities. Congenitally missing teeth are seen in a host of syndromes, and supernumerary teeth are also central

diagnostic findings in a number of syndromes. Additionally, mutations in several genes have been associated with both hypodontia and orofacial clefting

Grant sponsor: NIH; Grant numbers: DP2-OD00719, R01-DE021420.

Grant sponsor: California Institute of Regenerative Medicine; Grant number: RN2-00933.

Grant sponsor: Grant Agency of the Czech Republic; Grant number: CZ:GA ČR:GAP305/12/1766.

Ophir D. Klein, M.D., Ph.D. is Associate Professor in the Departments of Orofacial Sciences and Pediatrics, Chair of the Division of Craniofacial Anomalies, and Director of the Program in Craniofacial and Mesenchymal Biology at UCSF. Dr. Klein's research focuses in large part on understanding the processes underlying craniofacial and dental development. His laboratory uses mouse models to study the mechanisms responsible for the normal and abnormal development of teeth, facial skeleton, and other organs, as well as the regeneration of these organs.

Snehlata Oberoi, D.D.S., M.D.S. is Associate Professor of Orthodontics with the UCSF Center for Craniofacial Anomalies, where she provides assessment and treatment for children with craniofacial disorders. Her research focuses on developing new methods to assess the outcomes of treatment for cleft lip, cleft palate, and other craniofacial anomalies. She also collaborates with the Center's medical geneticists on research seeking to identify genetic mutations and how they affect dental and facial defects in various craniofacial anomalies.

Ann Huysseune, Ph.D. is Professor and Head of the Biology Department at Ghent University, Belgium. Her research interests are focused on the development, structure, and evolution of the skeleton, with particular attention to teeth. She uses various teleost fish and other non-mammalian species to study evo–devo aspects of skeletal tissues and skeletal elements. Current studies in her group focus on the dermal skeleton (including the teeth) and on the vertebral column.

Maria Hovorakova, Ph.D. is a researcher in the Laboratory of Odontogenesis, Department of Teratology at the Institute of Experimental Medicine at the Academy of Sciences CR, Prague, Czech Republic. She is currently working on tooth development in wild-type and mutant mice, with a focus on the role of rudiments in tooth development.

Miroslav Peterka, M.D., Ph.D. is Head of the Department of Teratology at the Institute of Experimental Medicine at the Academy of Sciences CR, Prague, Czech Republic. He is an Associate Professor at the 1st Medical Faculty, Charles University in Prague and a clinical teratologist involved in prevention of inborn defects at the Clinic of Plastic Surgery, 3rd Medical Faculty in Prague. His research interests are experimental and clinical teratology, as well as pathogenesis and epidemiology of developmental anomalies.

Renata Peterkova, M.D., Ph.D. is Head of the Laboratory of Odontogenesis, Department of Teratology at the Institute of Experimental Medicine at the Academy of Sciences CR, Prague, Czech Republic. Her focus is morphology, including embryology, histology, and anatomy, and her field of interest is the normal and pathological development of teeth and adjacent structures. During her research career, she has studied rudimentary structures during orofacial development. She is interested in their role during normal ontogeny, their involvement in the origin of developmental anomalies, and their evolutionary significance.

\*Correspondence to: Ophir D. Klein, M.D., Ph.D., Director, Program in Craniofacial and Mesenchymal Biology, UCSF, San Francisco, CA.

E-mail: ophir.klein@ucsf.edu

DOI 10.1002/ajmg.c.31382

Article first published online in Wiley Online Library (wileyonlinelibrary.com): 4 October 2013

in humans and mice, indicating that tooth anomalies and orofacial clefting may share common developmental pathways. Because the study of tooth development is central to understanding the pathogenesis of dental anomalies, this review begins with an overview of recent studies in vertebrate animal models, which is followed by a survey of dental anomalies with known or suspected genetic causes.

## LESSONS FROM ANIMAL MODELS

### Mouse Dentition: the Major Model System

Most of our knowledge regarding the cellular and genetic basis of mammalian tooth development has come from mouse studies. Although mouse dentition is simpler than that of humans, the developmental mechanisms are thought to be highly conserved between the two. Both humans and rodents have fewer teeth than the unreduced pattern of their

mammalian ancestors, in which up to three incisors, one canine, four premolars, and three molars may occur in each dental quadrant. A few species, such as some insectivores, have retained the full pattern of dentition. Humans have two incisors, one canine, two premolars and three molars in the permanent dentition. The adult mouse dentition is much more reduced than in the human, consisting of three molars at the back of the mouth and one incisor at the front, separated by a toothless region called a diastema, in each quadrant (Fig. 1). Another major difference between mouse and human dentition is that mice have only a single set of teeth, whereas in humans the first set of teeth (primary or deciduous teeth) is replaced by a permanent set during

*mouth and one incisor at the front, separated by a toothless region called a diastema, in each quadrant (Fig. 1).*

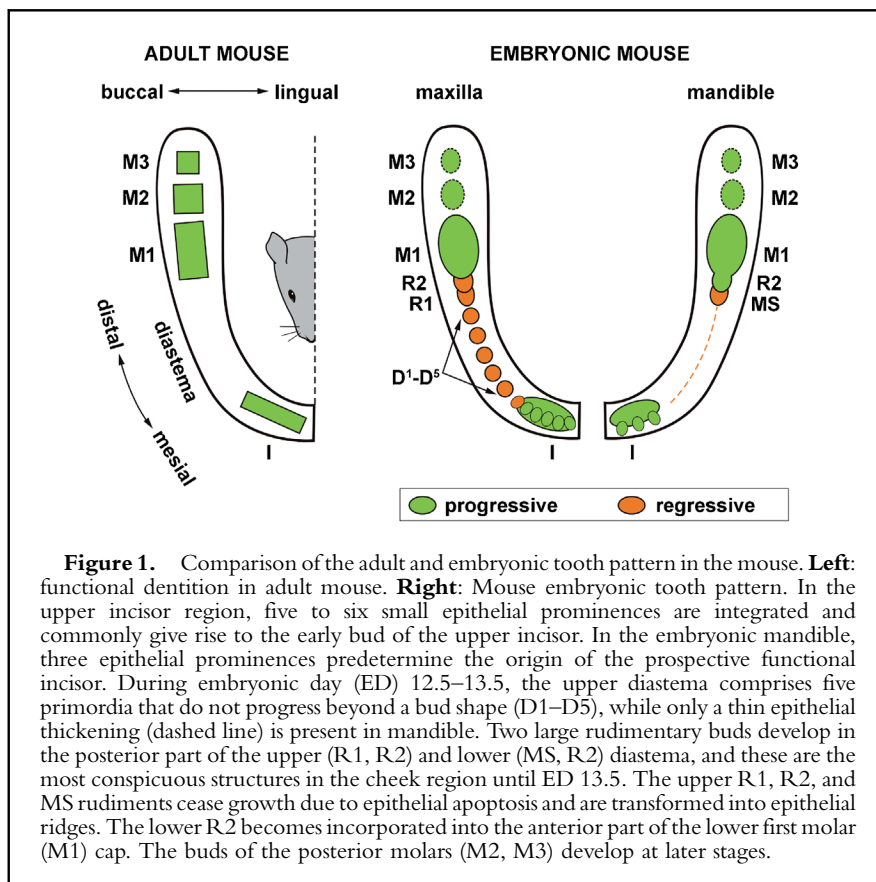
*Another major difference between mouse and human dentition is that mice have only a single set of teeth, whereas in humans the first set of teeth (primary or deciduous teeth) is replaced by a permanent set during childhood.*

*The adult mouse dentition is much more reduced than in the human, consisting of three molars at the back of the*

childhood. The mouse therefore provides a simplified model for tooth formation in humans.

Beyond serving as a model for understanding mammalian tooth development in general, studying the development of the reduced dentition in mouse provides two advantages. First, the permanently renewing incisor serves as a model to study the role of stem cells in organ regeneration [Harada et al., 1999; Seidel et al., 2010; Feng et al., 2011; Juuri et al., 2012; Laphanasupkul et al., 2012; Biels et al., 2013]. Second, the mouse embryonic jaws contain rudimentary tooth primordia of teeth that were suppressed during evolution [Peterkova et al., 2002b; Hovorakova et al., 2011] (Fig. 1). In the majority of the diastemal tooth primordia, development is arrested [Peterkova et al., 2003], such that the development of the mouse diastema represents a model to study hypodontia [Peterkova et al., 1995]. Some of these rudimentary tooth primordia may be rescued and can give rise to supernumerary teeth [Peterkova et al., 2002a, 2006; Klein et al., 2006], which can model controlled tooth regeneration [Peterkova et al., 2006, 2009; Cobourne and Sharpe, 2010].

Teeth form through a series of reciprocal interactions between epithelium (derived from oral ectoderm) and mesenchyme (derived from cranial neural crest), which begin at mid-gestation



in mouse embryos [Tucker and Sharpe, 2004]. The interactions between oral epithelium and underlying neural-crest derived mesenchyme are mediated by secreted signaling molecules from the major signaling families (FGF, TGF- $\beta$ , WNT, and HH), which lead to various intracellular events, including expression of transcription factors (e.g., members of the *Msx*, *Pax*, and *Runx* families, discussed below) [Jussila and Thesleff, 2012; Jheon et al., 2013].

As the epithelium and mesenchyme interact, the developing tooth (tooth germ) progresses through several stages (Fig. 2). The first morphological sign of tooth development is a localized thickening of the oral epithelium. Next, the thickened (dental) epithelium invaginates into the underlying mesenchyme, forming a dental lamina and tooth buds, while the adjacent dental mesenchyme condenses around the forming tooth buds. Subsequently, the epithelium around the bud tip extends farther into the mesenchyme, forming a cap and then a bell stage tooth germ. The dental epithelium (enamel organ) is surrounded by a layer of dental mesenchyme (dental sac), and the enamel organ encloses the mesenchymal papilla. The dental papilla arises from a small population of highly proliferative mesenchymal cells in close proximity to the inner dental epithelium and the primary enamel knot [Rothova et al., 2012]. Further epithelial morphogenesis and expansion of the dental

mesenchyme results in the formation of cusps. During the bell stage, cusp morphogenesis continues and cytodifferentiation begins, as the epithelial cells closest to the dental mesenchyme become enamel-producing ameloblasts, and the adjacent mesenchymal cells become dentin-producing odontoblasts [Ruch, 1995].

Epithelial morphogenesis and growth of the dental mesenchyme during the cap and bell stages are thought to be controlled and coordinated by signals produced by the enamel knot, a morphologically distinct region of the epithelium containing densely-packed, non-proliferating cells. The primary enamel knot forms at the center of the tooth germ at the onset of the cap stage [Jernvall et al., 1994] and is subsequently eliminated by apoptosis [Lesot et al., 1996; Vaahtokari et al., 1996]. Secondary enamel knots form at the cusp tips, and signals from them control later aspects of cusp morphogenesis [Jernvall et al., 1998].

In mouse and human, the upper incisors arise largely from the medial nasal process with a minor contribution of the maxillary facial process [Peterkova et al., 1995; Hovorakova et al., 2006]. The upper and lower molars arise from the first pharyngeal arch, which appears to be molecularly patterned in terms of tooth location and identity before any morphological signs of tooth development are evident. The mesenchyme of

the first pharyngeal arch initially has ubiquitous odontogenic potential, and the odontogenic mesenchyme is specified by its proximity to the oral epithelium, which is the source of the inductive signal. It is thought that FGF8 from the lateral oral epithelium and BMP4 from the medial oral epithelium differentially regulate the expression of transcription factors (e.g., *Dlx1*, *Dlx2*, and *Barx1* are expressed laterally, whereas *Msx1* and *Msx2* are expressed medially) [Neubuser et al., 1997; Bei and Maas, 1998; Keranen et al., 1999; St Amand et al., 2000; Thomas et al., 2000]. These expression patterns have been proposed to represent an “odontogenic homeobox code” that specifies tooth identity, analogous to homeobox codes found in other developmental systems [Sharpe, 1995].

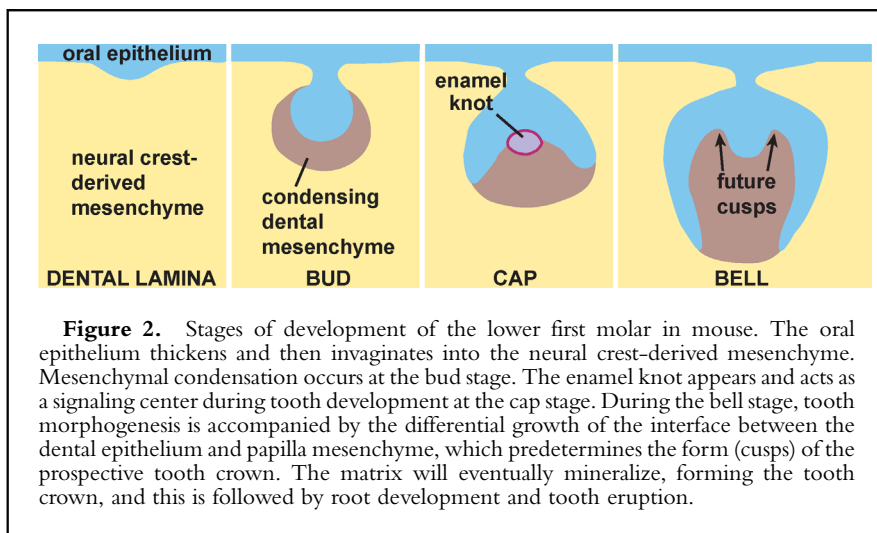
The earliest marker for the location of presumptive teeth is expression of *Pax9*, which results from antagonistic interactions of FGF and BMP signaling

---

***The earliest marker for the location of presumptive teeth is expression of Pax9, which results from antagonistic interactions of FGF and BMP signaling. Fgf8 induces Pax9 expression in first pharyngeal arch mesenchyme, whereas Bmp2 and Bmp4 inhibit this induction.***

---

[Neubuser et al., 1997]. *Fgf8* induces *Pax9* expression in first pharyngeal arch mesenchyme, whereas *Bmp2* and *Bmp4* inhibit this induction [Neubuser et al., 1997]. Therefore, *Pax9* is expressed only in regions where *Fgf8* is present but *Bmp2* and *Bmp4* are absent. Interestingly, although *Pax9* marks the sites of future tooth development, in mouse studies *Pax9* itself appears not to be necessary to position teeth or initiate odontogenesis. Thus, in the mouse *Pax9* mutant, teeth



develop normally up to the bud stage (E13.5) before arresting, indicating that this gene is critical for bud development but not for tooth initiation [Peters et al., 1998]. The role of *Pax9* in human hypodontia is discussed below.

The expression of other genes indicates that, at the earliest stages of tooth development, the instructive information resides in the epithelium. Sonic hedgehog (*Shh*) expression is restricted to the emerging tooth primordia. The restriction of *Shh* appears to be due to repression by *Wnt7b* in the non-dental epithelium [Sarkar et al., 2000]. At the bud stage, the instructive role shifts from the epithelium to the mesenchyme; transcription factors such as *Msx1*, *Pax9*, and *Runx2* are expressed in the condensed dental mesenchyme [Thesleff, 2006]. These factors, all of which are important in human tooth development as well, promote the expression of secreted signaling molecules including *Bmp4*, *Fgf3*, and *Wnt5a*, which act upon the epithelium and induce the enamel knot.

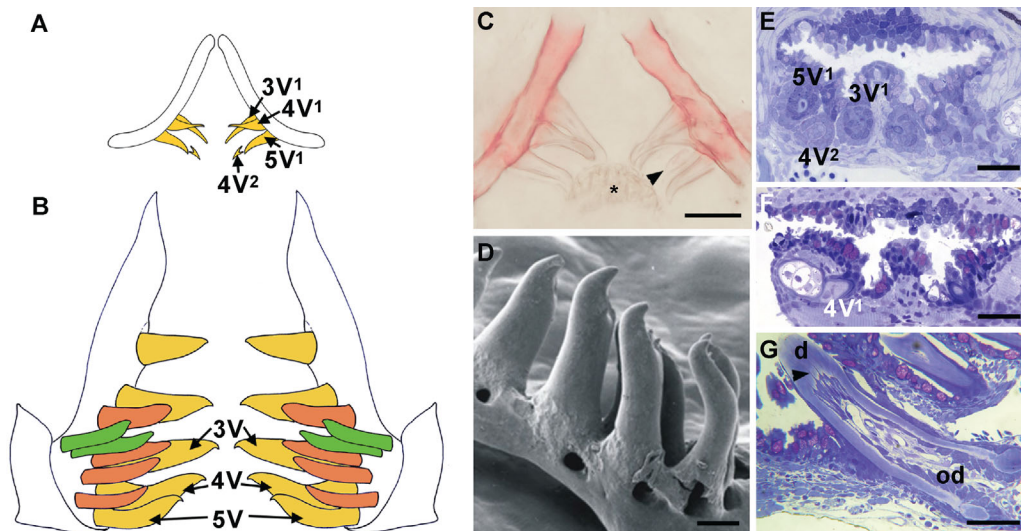
### Zebrafish Dentition: An Up-and-Coming Model

In recent years, animal models other than the mouse have emerged for the investigation of early development, organogenesis, and regeneration. Zebrafish in particular have become a favorite laboratory animal, as they are inexpensive to maintain, reproduce easily and abundantly, and have the vertebrate body plan. A vast array of genetic and molecular tools has been developed for zebrafish, which have now been used to model nearly every class of human disease.

The zebrafish has no teeth on its oral jaws, but it has maintained sets of teeth on the rearmost pharyngeal arch as a remnant of the once widespread oral tooth coverage in its remote ancestors. These pharyngeal teeth are continuously replaced throughout life and have been well characterized in terms of patterning, structure and morphodifferentiation [Huyssseune et al., 1998; Van der heyden and Huyssseune, 2000; Van der heyden et al., 2000] (Fig. 3). A

number of studies have addressed the genetic and molecular underpinnings of tooth development and replacement (reviewed by Stock [2007]). Tooth formation and replacement start early, well before many mutations become lethal (at 48 and 80 hr post-fertilization, resp.) [Borday-Birraux et al., 2006]. This circumvents the lethality encountered when modeling craniofacial anomalies and dental diseases in mouse models. Additionally, because mice do not replace their dentition, dissecting the mechanism of natural lifelong replacement in zebrafish represents a strategy for understanding tooth replacement in mammals that is not possible with the mouse model.

While some developmental genes that are expressed early in mammalian tooth development, such as *pax9*, are not expressed during zebrafish tooth development [Jackman et al., 2004], many parallels with mammalian teeth exist. The importance of Fgf signaling is similar to that in the mouse. Overexpression of Fgf ligands in zebrafish



**Figure 3.** Zebrafish tooth development. **A,B:** Schematic representation of the pharyngeal dentition of a zebrafish at 6 days post-fertilization (dpf) (A) and 1-month old (B). Ventral tooth row, yellow; mediadorsal tooth row, ochre; dorsal tooth row, green; replacement teeth not shown in (B). At 6 dpf, primary teeth  $3V^1$ ,  $4V^1$ , and  $5V^1$  are attached, and the first replacement tooth ( $4V^2$ ) is mineralizing. **C:** Alizarin stained and cleared preparation of the dentition of an 8 dpf zebrafish. Tooth  $4V^2$  (arrowhead) is more advanced compared to the scheme shown in (A). Note keratinized pad (asterisk) opposing the teeth. **D:** SEM view of ventral teeth  $2V$ – $5V$  in a juvenile zebrafish (anterior to left). **E,F:** One micrometer plastic cross-sections through the pharyngeal dentition of a 5 dpf wild-type (WT) zebrafish (E) and 5 dpf *edar*<sup>-/-</sup> mutant (F). Teeth  $3V^1$ ,  $4V^1$ ,  $5V^1$ , and replacement tooth  $4V^2$  are present in the WT; only  $4V^1$  is present in the mutant. **G:** One micrometer plastic cross-section through an attaching tooth in a one month zebrafish; note odontoblasts (od) sending processes (arrowhead) into the dentin (d). Scale bars C,E,F = 25  $\mu$ m, D = 100  $\mu$ m, G = 50  $\mu$ m.





**Figure 4.** Ectodermal dysplasia. Peg shaped incisors and multiple missing teeth in a 13-year-old male with X-linked hypohidrotic ectodermal dysplasia.

embryos results in supernumerary primary teeth [Jackman et al., 2013], whereas blocking Fgf signaling results in arrest of primary tooth formation [Jackman et al., 2004]. Downregulation of Bmp signaling likewise results in supernumerary teeth [Jackman et al., 2013]. Mutations affecting ectodysplasin (*eda*) or its receptor (*edar*) lead to hypodontia, as discussed below for humans [Harris et al., 2008] (Figs. 3 and 4).

Wnt signaling is a key event in replacement and renewal of ectodermal appendages, and thus potentially also in the replacement of primary by permanent teeth. Although several mutations in components of the canonical Wnt signaling pathway do not affect tooth number in zebrafish (AH personal observations and [Wiweger et al., 2012]), *Lef1* mutants display oligodontia [McGraw et al., 2011]. Whether the Wnt pathway plays a role at the level of initiation of primary teeth or defective tooth replacement needs to be clarified.

In addition to signaling molecules and transcription factors, there are structural similarities in the tissues and matrices that constitute mammalian and zebrafish teeth. Thus, current studies aim at understanding gene function in cytodifferentiation or mineralization of teeth [Go and Korzh, 2013; Verstraeten et al., 2013], or at elucidating the role of particular genes in rare diseases associated with dental dysplasia [Bloch-Zupan et al., 2011].

Initially, large-scale forward genetic screens were used to identify genes relevant to craniofacial and tooth development, but new technologies are emerging. These include the rapid and targeted introduction of mutations via

engineered endonucleases such as ZFNs (zinc finger nucleases) and TALENs (transcription activator-like effector nucleases) (reviewed in Huang et al. [2012]). These techniques of reverse genetics hold great promise and will continue to increase the relevance of zebrafish as a model for craniofacial and dental diseases.

## HUMAN TOOTH DEVELOPMENTAL ANOMALIES

Genetic tooth anomalies can be divided in three main ways. First, the type of anomaly, whether of number, shape, or both, must be determined. These anomalies can include too many teeth (hyperdontia), too few teeth (tooth agenesis), or abnormalities of shape such as taurodontism (enlargement of the body and pulp of the tooth). Second, it is important to know if the anomaly is syndromic, that is, part of a condition with other features, or whether it is isolated. Third, the mode of inheritance must be determined. Sporadic occurrences of genetic anomalies are presumed to be caused by recessive or multifactorial inheritance, by new mutations, or by stochastic occurrences. For the remainder of this review, we will focus on genetic causes of abnormal tooth development and the manifestations of these abnormalities in terms of clinical care; disorders of tooth mineralization are not discussed in this review.

### Tooth Agenesis: Hypodontia, Oligodontia, and Anodontia

Hypodontia refers to the absence of one to six teeth, excluding third molars, whereas oligodontia refers to the absence of more than six teeth, excluding third molars. Third molars are excluded,

### *the absence of more than six teeth, excluding third molars.*

as these are missing in up to 20% of patients, making this a very common finding. Anodontia is the complete absence of teeth in one or both dentitions. Together, these are referred to as tooth agenesis.

Hypodontia can occur as a sporadic finding, as part of a syndrome, or as a non-syndromic familial form. There are over 80 syndromes that include hypodontia (see Online Mendelian Inheritance in Man, <http://www.ncbi.nlm.nih.gov/omim>), and some representative syndromes are discussed below. Non-syndromic familial hypodontia may be inherited as an autosomal dominant [Alvesalo and Portin, 1969; Vastardis et al., 1996; Goldenberg et al., 2000], autosomal recessive [Ahmad et al., 1998; Pirinen et al., 2001], or sex-linked trait [Erpenstein and Pfeiffer, 1967; De Coster et al., 2009].

Missing teeth are more common in the permanent dentition than in the primary dentition, but there is a strong correlation between hypodontia in the primary and permanent dentition [Matalova et al., 2008]. In the primary dentition, the prevalence varies from 0.4% to 0.9% in Europe [Ravn, 1971; Jarvinen and Lehtinen, 1981] and is 2.4% in Japan [Yonezu et al., 1997]. In the permanent dentition, the most commonly missing teeth in Caucasians are the mandibular second premolars (4.2%), maxillary lateral incisors (2.3%), and maxillary second premolars (2.2%) [Polder et al., 2004]. Several researchers have reported a higher prevalence of hypodontia among females, with a female to male ratio of 3:2 [Brook, 1975], but the reasons for this are not known.

In individuals with congenitally missing teeth in one region but crowding in another, autotransplantation has good long-term prognosis if the transplanted tooth has completed half of its root formation [Paulsen et al., 1995]. Endosseous implant replacement of the missing teeth is another popular and viable option.

*Hypodontia refers to the absence of one to six teeth, excluding third molars, whereas oligodontia refers to*

*Sporadic hypodontia*

Sporadic anodontia and oligodontia are rare, but sporadic hypodontia is a relatively common finding. As a general rule, if only one or a few teeth are missing, the missing tooth will be the most distal tooth of any given type. For example, if a molar is missing it is usually the third molar, if an incisor it is the lateral incisor and if a premolar it is usually the second premolar.

Both genetic and environmental factors may contribute to sporadic hypodontia [Schalk-Van Der Weide et al., 1993; Vastardis, 2000]. In terms of environmental influences, development of the permanent teeth may be affected by various factors such as trauma to the jaws, surgical procedures on the jaws, early extraction of the primary teeth, chemotherapy and radiation therapy [Schalk-Van Der Weide et al., 1993; Nasman et al., 1997]. Currently, little is known about the genetic etiologies of sporadic hypodontia, although these may be similar to those that cause familial non-syndromic hypodontia. Mutation in *PAX9* has been associated with both sporadic (or low-penetrance familial) hypodontia and oligodontia [Pawlowska et al., 2010].

*Familial, non-syndromic hypodontia*

In familial hypodontia, the inheritance in the majority of families is autosomal dominant with incomplete penetrance and variable expressivity. Mutations in several genes have been found to cause familial hypodontia. It is also thought that many cases of familial hypodontia may represent a complex, multifactorial condition.

A missense mutation in *MSX1* on chromosome 4 was the first mutation found to be associated with non-syndromic hypodontia. The mutation was found in all affected members of a family with missing second premolars and third molars. Some also had missing

***associated with non-syndromic hypodontia. The mutation was found in all affected members of a family with missing second premolars and third molars.***

maxillary first premolars, mandibular first molars, one or both upper lateral incisors or a single lower central incisor. All had normal primary dentitions [Vastardis et al., 1996].

Subsequently, a second gene—*PAX9* on chromosome 14—was found to be involved in hypodontia. A frame shift mutation in *PAX9* was identified in a family with autosomal dominant hypodontia that had missing permanent molars [Stockton et al., 2000]. Some individuals were missing the maxillary and/or mandibular second premolars as well as central incisors. Since then a number of mutations and polymorphisms have been identified in the human *PAX9* region with variable forms of oligodontia that mainly affect the molars [Nieminen et al., 2001; Frazier-Bowers et al., 2002; Das et al., 2003; Mostowska et al., 2003a,b, 2006].

More recently, hypodontia associated with *AXIN2* mutations has been identified to affect a wider range of tooth types. In a four-generation Finnish family, 11 members were found to be missing at least 8 permanent teeth along with an increased risk of developing colorectal neoplasia [Lammi et al., 2004]. *AXIN2* is a component of the WNT signaling pathway.

Mutations in two genes that can cause ED, *EDA* and *WNT10A*, can also cause isolated hypodontia; the syndromic effects of mutations in these genes are discussed later in this review. *EDA* mutations have recently been linked to non-syndromic hypodontia, which typically includes missing mandibular and/or upper incisors and canine [Yang et al., 2013]. A recent study found that 56% of the patients with isolated hypodontia had a mutation in *WNT10A*, which is strongly expressed in the dental epithelium at the tooth

***A recent study found that 56% of the patients with isolated hypodontia had a mutation in WNT10A, which is strongly expressed in the dental epithelium at the tooth initiation stage and is required for normal tooth development beyond the bud stage.***

initiation stage and is required for normal tooth development beyond the bud stage [van den Boogaard et al., 2012].

*Syndromic hypodontia*

*Van der Woude syndrome.* VWS (OMIM #119300) is characterized by paramedian lip pits and sinuses, conical elevations of the lower lip, cleft lip and/or cleft palate (CP), and hypodontia. Adhesions between maxilla and mandible (syngnathia) have been reported [Leck and Aird, 1984]. At times, VWS can be identified solely based on lip pits [Soni et al., 2012]. VWS is the most common clefting syndrome and occurs in approximately 2% of the population with facial clefts [Rintala and Ranta, 1981; Schutte et al., 1996]. The prevalence of VWS is up to 1 in 40,000 still born or live births [Burdick, 1986].

VWS is inherited in an autosomal dominant fashion and is caused by mutations in the interferon regulatory factor 6 (*IRF6*) gene [Kondo et al., 2002]. However, there is some genetic heterogeneity in VWS [Wong et al., 2001]. *IRF6* mutations also cause popliteal pterygium syndrome (PPS), which in addition to the craniofacial findings of VWS consists of genital abnormalities, webbing of fingers, toes, and behind knees, and other occasional features [Lees et al., 1999].

Lip pits are the most common manifestation of VWS. The occurrence has been reported in up to 88% of the affected individuals [Janku et al., 1980].

***A missense mutation in MSX1 on chromosome 4 was the first mutation found to be***

VWS is underdiagnosed because lower lip pits are often missed, leading to undetected submucous CP [Lam et al., 2010]. In CP patients with lower lip sinuses, the incidence of hypodontia was 77.8% [Ranta and Rintala, 1982].

Hypodontia is frequently seen in VWS, and a close association between VWS and congenital absence of second premolars has been shown [Schneider, 1973; Calzavara Pinton et al., 1989; Oberoi and Vargervik, 2005a]. There is a tendency toward greater maxillary hypoplasia in VWS, particularly in the most severe cleft type (bilateral CLP). In addition, the highest incidence of missing teeth is also seen in VWS with the more severe cleft type [Oberoi and Vargervik, 2005a].

*Ectodermal dysplasia.* There are more than 150 clinically distinct inherited syndromes in which ED is present. ED consists of variable defects in the morphogenesis of ectodermal derivatives including skin, sweat glands, hair, nails, and teeth. Many of the ED syndromes have non-ectodermal manifestations, which are not discussed here in detail. Patients with ED can have hypodontia or anodontia, with the anterior teeth usually conical or peg-shaped (Fig. 4); the alveolar ridge is deficient and patients tend to have hypoplastic maxillae with anterior cross-bite and low face height with overclosure.

The ED syndromes can be inherited in an autosomal dominant, autosomal recessive, or X-linked form. The most common form of ED is X-linked hypohidrotic ED, or XLHED (OMIM 305100) and is caused by mutations in the gene encoding ectodysplasin-A (*EDA*), which is a member of the TNF signaling pathway. TNF signaling through *EDA* activates NFKB1, which is known to play an important role in odontogenesis [Ohazama and Sharpe, 2004]. Affected males show severe oligodontia or anodontia in both primary and permanent dentition. An average of nine permanent teeth develop in individuals with classic XLHED, typically the canines and first molars [Lexner et al., 2007]. Teeth are often

smaller than average and have an altered morphology. Anterior teeth tend to be conical in shape. Dental radiographs are helpful in determining the extent of hypodontia. Taurodontism is more common in the molars of individuals with XLHED.

Female carriers have variable, milder phenotypic expressions resulting from X chromosome inactivation. They may have hypodontia or anodontia and abnormally shaped teeth. Sixty to eighty percent of carriers have some degree of hypodontia [Cambiaghi et al., 2000]. In XLHED, both primary and permanent dentitions are affected [Clauss et al., 2008].

Odonto-onycho-dermal dysplasia (OMIM 257980) is an autosomal recessive ED syndrome caused by mutations in *WNT10A* [Adaimy et al., 2007]. These patients present with dry hair, severe hypodontia, smooth tongue, nail dysplasia, hyperhidrosis of palms and soles, and hyperkeratosis. As mentioned above, *WNT10A* mutations are also a common cause of isolated hypodontia.

*Oral-facial-digital syndrome type I.* OFD syndrome type 1 (OMIM 311200) is a developmental disorder characterized by malformations of the face, oral cavity, digits, central nervous system, and kidneys. The prevalence of OFD1 is 1 in 50,000 to 1 in 250,000 live births. OFD1 is an X-linked disorder caused by mutations in the gene *OFD1*. This gene is important for formation of a cellular organelle known as the primary cilium. OFD1 affects only females, as this condition is lethal in males. Although clinical features overlap with other types of OFD (of which there are at least 9), X-linked dominant inheritance and polycystic kidney disease are specific to OFD1.

The typical oral manifestations of OFD1 are seen in the tongue, palate, and teeth. The tongue is lobed and is bifid or trifid with nodules (hamartomas or lipomas); this is seen in at least a third of patients with OFD1. Ankyloglossia due to a short lingual frenulum is common. Cleft hard or soft palate, submucous CP, or highly arched palate occur in more than 50% of affected

patients. Alveolar clefts and accessory gingival frenulae are common. These fibrous bands are hyperplastic frenulae extending from the buccal mucous membrane to the alveolar ridge, resulting in notching of the alveolar ridges. Dental abnormalities include missing teeth, extra teeth, enamel dysplasia, and malocclusion [Al-Qattan, 1998; Toriello and Franco, 2007]. The lower lateral incisors are missing in 50% of individuals, and this is associated with fibrous bands in the region.

*Rieger syndrome.* Rieger syndrome (OMIM 601542) is an autosomal dominant disorder characterized by malformations in the anterior chamber of the eye, umbilical anomalies, and hypodontia. Its prevalence is 1 in 200,000. When the ocular abnormality is combined with other craniofacial, dental, and developmental somatic anomalies, it is given the name Axenfeld-Rieger syndrome (ARS; OMIM 180500). Glaucoma is found in 50% of the cases [Shields et al., 1985]. Craniofacial, dental, and umbilical anomalies are also regularly reported in connection with ARS [Childers and Wright, 1986; Dressler and Gramer, 2006]. Characteristic craniofacial features are maxillary hypoplasia, hypertelorism, and telecanthus. Other systemic features like anomalies of the pituitary gland, middle ear deafness, heart defects, hypospadias, short stature, and mental retardation were diagnosed in several ARS patients [Shields et al., 1985; Ozeki et al., 1999].

Three genetic loci have been associated with ARS so far. *FOXC1* and *PITX2* encode transcription factors and are located on chromosomes 6p25 and 4q25, respectively [Tumer and

---

**Three genetic loci have been associated with ARS so far. *FOXC1* and *PITX2* encode transcription factors and are located on chromosomes 6p25 and 4q25, respectively.**

---

Bach-Holm, 2009]. A third locus for ARS was mapped to chromosome 13q14 but the gene has not yet been identified. Therefore ARS is considered as a morphologically and genetically heterogeneous disorder.

---

***A third locus for ARS was mapped to chromosome 13q14 but the gene has not yet been identified. Therefore ARS is considered as a morphologically and genetically heterogeneous disorder.***

---

Dental features include hypodontia/oligodontia of primary and permanent dentition. The most commonly missing teeth are lower second premolars and subsequently the central incisors and upper second premolars [Dressler et al., 2010]. The missing teeth in the anterior maxilla are thought to cause underdevelopment of the premaxilla. Other dental abnormalities include hyperplastic upper labial frenulum, peg-shaped front teeth, and small teeth, enamel hypoplasia, conical-shaped teeth, shortened roots, taurodontism, and delayed eruption.

**Holoprosencephaly.** Holoprosencephaly (HPE; OMIM # 236100), which occurs with a frequency of 1 in 16,000 live births and 1 in every 200 spontaneous abortions, is an etiologically heterogeneous condition with teratogenic and genetic factors [Hall et al., 1997]. HPE is caused by impaired midline cleavage of the embryonic forebrain. HPE is the most common defect of the forebrain and mid-face in human [Wallis and Muenke, 2000]. The most severe form is cyclopia, and the mildest phenotype is a single upper central incisor. Several loci for HPE have been mapped. HPE3 is caused by mutations in the Sonic hedgehog (*SHH*) gene, which was described above in the context of tooth

development [Lami et al., 2013]. Both recessive and dominant inheritance of HPE has been reported [Cohen and Gorlin, 1969].

The HPE spectrum is commonly associated with solitary median maxillary control incisor (SMMCI), a rare dental anomaly that can occur in either a primary or permanent dentition. It can be an isolated dental finding or occur in association with other recognized syndromes or specific chromosomal abnormalities [Nanni et al., 2001]. The spectrum of defects is extremely variable, as some individuals can present with the full HPE spectrum, some may have only mild symptoms such as SMMCI, and others may have no symptoms at all [El-Jaick et al., 2007]. Sometimes SMMCI is the most easily recognizable anomaly associated with HPE [Hall et al., 1997]. All HPE patients have SMMCI, but not all SMMCI patients have been diagnosed with HPE [Kopp, 1967]. Several syndromes have been associated with SMMCI, including ED, Duane retraction syndrome, velocardiofacial syndrome, CHARGE syndrome, VACTERL association, and HPE [Oberoi and Vargervik, 2005b].

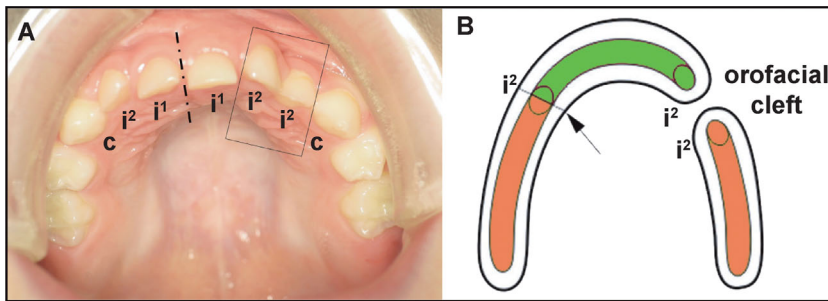
**Tooth anomalies associated with cleft lip and palate.** It has long been recognized that hypodontia is associated with clefts of the lip and palate. Studies have found that hypodontia is present in approximately 80% of children with non-syndromic clefts [Shapira et al., 1999], and the prevalence of hypodontia increases markedly with the severity of the cleft [Ranta, 1986]. The teeth most frequently missing on the cleft side were the upper permanent lateral incisors; these were absent in 74% of all cleft patients, followed by maxillary and mandibular second premolars. The teeth most often missing on the non-cleft side were the maxillary second premolars, followed by the maxillary lateral incisors and mandibular second premolars. Interestingly, congenital absence of both the maxillary lateral incisors and second premolars was found more frequently in siblings of patients with clefts as well [Eerens et al., 2001].

Hypodontia outside the cleft region is more frequent in cleft individuals than in non-cleft individuals [Shapira et al., 1999], and, in general, hypodontia occurs about 10 times more frequently on the cleft side, with left predominance. This is consistent with the side preference for unilateral cleft lip and palate. Additionally, the prevalence of hypodontia (excluding third molars) has been reported as 50% in Pierre Robin sequence, which comprises a triad of micrognathia, glossoptosis, and CP. In these cases, there is an increased frequency of hypodontia in the lower jaw compared to individuals with isolated cleft lip and palate [Ranta, 1986].

In addition, these individuals can have other anomalies related to the shape and size of individual teeth, or the presence of additional teeth. A recent meta-analysis concluded that patients with cleft lip and palate experience not only more tooth agenesis, but also supernumerary teeth and anomalous tooth morphology in comparison to non-cleft patients [Tannure et al., 2012]. The most frequently undersized teeth are upper lateral incisors, and while there is evidence that other teeth in cleft patients have higher levels of agenesis and dysmorphology than in non-cleft patients, the data are conflicting. In cleft patients, a high occurrence of a supernumerary lateral incisor (40–73%) has been detected in the primary dentition [Bohn, 1950; Hansen and Mehdinia, 2002].

From an embryological point of view, it has been shown using 3D reconstructions that the location of the fusion of the medial nasal and maxillary facial outgrowths transiently appears as a furrow on the mesenchymal aspect of the developing lateral incisor germ in humans until prenatal week 8. This implies that the upper incisor germ takes its origin partially from the maxillary outgrowth (Fig. 5) [Hovorakova et al., 2006]. This complex origin at a critical place of fusion of facial processes can explain the developmental vulnerability and resulting anomalies of the upper lateral incisor [Hovorakova et al., 2006]. Complete orofacial clefts of the lip and





**Figure 5.** Dual developmental origin and duplication of the upper lateral incisor. **A:** The supernumerary lateral incisor in a patient after the operation of a left-sided cleft lip and palate. **B:** Scheme showing the dual developmental origin of the upper lateral incisor and its disturbance associated with a jaw cleft. The upper lateral incisor develops by a physiological fusion (arrow) of two parts, one originating from the dental epithelium of the medial nasal (green) and one originating from the dental epithelium of the maxillary (orange) facial outgrowth. In cleft patients (A), the lateral incisor duplication adjacent to the cleft area has been explained by the non-fusion of both incisor subcomponents as a result of the non-fusion of the medial nasal and maxillary processes (A, B). The increasing extent of hypoplasia of the facial outgrowth tissues determines the formation of two, one, or no lateral incisor, respectively. The lowest level of tissue insufficiency of the facial processes might result in the lateral incisor anomalies even in an intact jaw (without cleft). Dash-and-dotted line represents midline.  $i^1$ ,  $i^2$ , and c: upper deciduous central incisor, lateral incisor, and canine, respectively.

alveolus result from the failure of the fusion of the medial nasal and maxillary processes. Consequently, the fusion of the dental epithelia is also absent and the two incisor subcomponents remain separate, such that a duplication of the lateral incisor occurs in the cleft area (Fig. 5). It has been proposed that the number of lateral incisors, even in normal individuals, depends on whether both, one, or no incisor subcomponent is able to give rise to a functional tooth [Hovorakova et al., 2006].

### Delayed Formation and Eruption of Teeth

The permanent teeth usually replace the primary teeth between the ages of 6–12 years. However, eruption times for the permanent teeth can vary considerably. The lower incisor shows the least variability and the lower second premolar the greatest in timing of eruption. When two primary teeth are fused, it is linked with the absence of permanent teeth.

Several syndromes have delayed formation and eruption of teeth, including Apert syndrome [Kaloust et al., 1997], cleidocranial dysplasia, Dubowitz

syndrome, Goltz syndrome, progeria, Menke syndrome and oculofaciocardiodental (OFCD) syndrome [Oberoi et al., 2005]. Two of these syndromes are discussed below as examples.

In Apert syndrome, there are delays in both development and eruption, and there can also be ectopic eruption and abnormalities in incisor and molar shape [Kaloust et al., 1997]. Erupting teeth remain buried in thickened gingival tissues for long periods of time. The alveolar swellings of the maxillary arch are characteristic of the syndrome and have been shown to contain excessive mucopolysaccharides, predominantly hyaluronic acid [Peterson and Pruzansky, 1974]. Activating mutations in genes encoding receptors for Fibroblast Growth Factors, which were discussed above in the context of tooth development, cause Apert syndrome. However, it is not clear how these mutations contribute to the characteristic dental and gingival findings in Apert syndrome [Kaloust et al., 1997].

OFCD syndrome (OMIM 300166) is an X-linked condition with characteristic ocular, facial, cardiac, and dental findings in affected females and presumed lethality in affected males. The

most typical dental anomaly is canine radiculomegaly (enlarged roots). Other

---

**OFCD syndrome (OMIM 300166) is an X-linked condition with characteristic ocular, facial, cardiac, and dental findings in affected females and presumed lethality in affected males. The most typical dental anomaly is canine radiculomegaly (enlarged roots).**

---

findings include delayed dental development and eruption, oligodontia, retained primary teeth and variable root length. Mutations in the BCOR gene have been found in this condition [Ng et al., 2004].

Delayed tooth eruption has also been found in the upper jaw of patients with orofacial clefts. Eruption of the permanent upper lateral incisor, which is also sometimes absent in patients with cleft lip and palate, and the permanent second molar is retarded in patients with cleft lip and palate. In contrast, earlier eruption has been found in the permanent and deciduous maxillary canine, first and second premolars. The delay or acceleration of tooth eruption in cleft patients might be a consequence of the affected bones and teeth [Peterka et al., 1996].

### Abnormalities in Tooth Size, Shape, and Form

Abnormalities in tooth size and shape are thought to result from disturbances in the morphodifferentiation (cap-bell) stage of development. About 5% of the population has a significant “tooth size discrepancy” due to disproportion in the size of upper and lower teeth. The most common abnormality is a variation in size of the upper lateral incisors and second premolars. In patients with

hypodontia, the most common abnormality is a peg-shaped upper lateral incisor.

There is very often a discrepancy between tooth size and jaw size. The combination of microdontia and normal jaw size is accompanied by the presence of tremata (free spaces between teeth). Similarly, a shorter jaw in the mesio-distal direction with teeth of normal size results in orthodontic anomalies. This disproportion is most pronounced in the upper jaw of cleft patients, where the permanent teeth have normal mesio-distal dimension, while the upper jaw arch is significantly shorter [Peterka et al., 1996].

Sometimes, tooth germs may fuse or germinate during development [Guttal et al., 2010], resulting in teeth with separate pulp chambers joined at the dentin or teeth with a common pulp chamber, respectively. It is often difficult to differentiate between the two, but if a lateral incisor is missing it is most likely because of fusion of the central and lateral incisor primordia.

Taurodontism (OMIM 272700) is characterized by a large pulp chamber and is most commonly seen in molars. The word “taurodontism” was first used to describe the teeth of Neanderthals and another group of prehistoric humans, the Heidelbergers [Keith, 1913]. Taurodontism causes constriction of the cemento-enamel junction, thus elongating the pulp chambers vertically creating an apically displaced pulp. There is significant variation among modern day populations. The prevalence has been reported as 0.5% in Japanese [Daito, 1971], 0.57–3.2% in white Americans [Blumberg et al., 1971; Witkop, 1976], 4.3% in African Americans [Jorgenson et al., 1982], 8% in Jordanians [Darwazeh et al., 1998], 33–41% in certain African populations [Shaw, 1928], and 46.4% in young adult Chinese [Macdonald-Jankowski and Li, 1993]. Taurodontism is thought to be a polygenic trait, and both autosomal dominant and recessive inheritance have been suggested.

A taurodontic tooth is thought to result from a disturbance in growth of Hertwig's epithelial root sheath. Based

on this hypothesis, there may be an association between taurodontism and hypodontia, as both conditions may be attributed to defects in the growth of dental epithelium [Hu and Simmer, 2007]. Taurodontism has been described together with isolated [Stenvik et al., 1972; Seow and Lai, 1989; Schalk-Van Der Weide et al., 1993] and syndromic hypodontia in many syndromes, including 18p11.3 deletion [Kantaputra et al., 2006], Smith–Magenis syndrome [Tomona et al., 2006], tricho–dento–osseous syndrome [Hart et al., 1997; Wright et al., 1997; Price et al., 1999; Islam et al., 2005], Klinefelter's syndrome [Komatz et al., 1978; Hillebrand et al., 1990; Yeh and Hsu, 1999], Williams syndrome [Axelsson et al., 2003], McCune–Albright syndrome [Akintoye et al., 2003], Down syndrome [Alpoz and Eronat, 1997] and Ellis van Creveld syndrome [Hunter and Roberts, 1998]. It has also been described in individuals with cleft lip and palate. An autosomal dominant hypoplastic/hypomature amelogenesis imperfecta (AI) associated with taurodontism (OMIM 104510) has been mapped to the distal-less homeobox (*DLX3*) locus [Dong et al., 2005]. More recently, taurodontism has been linked with Laurence–Moon/Bardet–Biedl syndrome (LM/BBS) and therefore should be included as a minor criterion in diagnosing LM/BSS [Andersson et al., 2013]. Lastly, there may be a common genetic etiology between VWS, hypodontia, and taurodontism [Nawa et al., 2008]. The frequency of taurodontism in VWS subjects was almost 50% [Nawa et al., 2008].

### Supernumerary Teeth

A supernumerary tooth is an additional tooth that can be found in any region of the dental arch. Supernumerary teeth result from disturbances during the initiation and proliferation stages of dental development. The most common supernumerary tooth that appears is in the maxillary midline and is called mesiodens. The prevalence of supernumerary teeth is between 0.3% and 0.8% in primary dentition and 1.5% and 3.5% in permanent dentition [Brook, 1974].

A male to female ratio of 2:1 is found in populations with single supernumerary teeth [Kantor et al., 1988] which increases to 3:1 for multiple supernumerary teeth [Gibson, 1979]. Although inherited forms are rare, a familial inheritance has been reported that can be autosomal dominant with incomplete penetrance, autosomal recessive [Cassia et al., 2004] or sex-linked pattern of inheritance [Burzynski and Escobar, 1983].

Greater than 90% of supernumeraries will occur in the upper jaw, and approximately 25% of the maxillary anterior supernumerary teeth erupt, but more commonly they are impacted and require extraction. Supernumerary teeth may be unilateral or bilateral, single or multiple, and may be found in one or both jaws. Multiple supernumerary teeth are rare in non-syndromic individuals, so such a finding should prompt a referral to a medical geneticist. An increased prevalence of supernumerary teeth can be found in cleft lip and palate patients, and there are over 20 syndromes with supernumerary teeth, the most common being cleidocranial dysplasia and Gardner syndrome [Moore et al., 2002]. The frequency of supernumerary teeth in individuals with unilateral cleft lip and/or palate was found to be 22.2% [Scheiner and Sampson, 1997], with males affected twice as often as females in the permanent dentition.

There are various hypotheses regarding the etiology of supernumerary teeth. According to one, a supernumerary tooth is created as a result of dichotomy of the tooth bud [Liu, 1995]. Another theory is that supernumeraries are formed as a result of local, independent conditioned hyperactivity of the dental lamina [Liu, 1995; Scheiner and Sampson, 1997]. Sometimes, supernumerary teeth can be interpreted as atavisms, if they appear at locations where teeth were suppressed during evolution [Smith, 1969; Peterkova et al., 2006].

The diagnosis of a supernumerary tooth is confirmed by radiographic examination if abnormal clinical signs are found. Periapical and occlusal radiographs are commonly used in the incisor

region. Three-dimensional cone beam CT is valuable as it shows the position of the supernumerary in all three dimensions, thereby enabling the correct buccal or palatal approach during removal and direction of force application for orthodontic alignment [Liu et al., 2007].

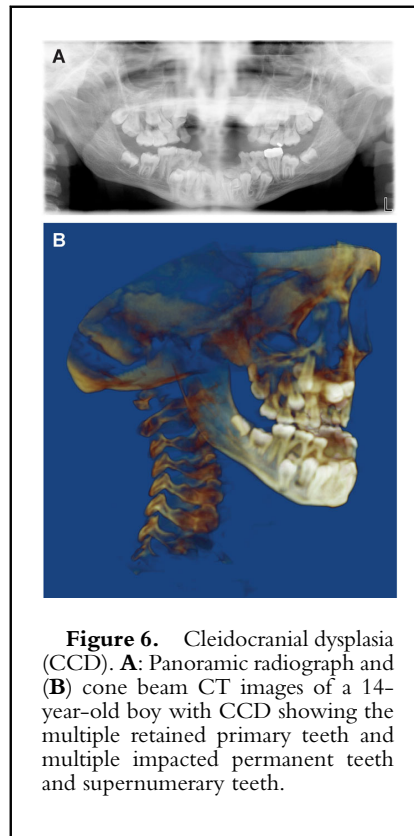
Some of the problems associated with supernumerary teeth include failure of eruption, displacement [Howard, 1967], crowding, and formation of dentigerous cysts [Awang and Siar, 1989]. Root resorption of adjacent teeth is a rare occurrence as well [Hogstrom and Andersson, 1987].

#### *Cleidocranial dysplasia*

The best-known syndrome associated with supernumerary teeth is cleidocranial dysplasia (CCD). CCD (OMIM #119600) is an autosomal dominant skeletal dysplasia associated with clavicle hypoplasia and dental abnormalities and has a prevalence of 1 in 1,000,000. It is caused by mutations in *RUNX2*, which encodes a transcription factor that activates osteoblast differentiation. One third of CCD cases are sporadic and represent new mutations [Otto et al., 2002].

Individuals with CCD have growth retardation with moderate short stature, delayed fontanelle closure with parietal and frontal bossing, midface hypoplasia, hypertelorism, low nasal bridge, brachydactyly and hearing loss. They may have CP or a narrow, high palate.

Dental manifestations are found in more than 90% of individuals with CCD and include delayed eruption of deciduous and permanent teeth, supernumerary teeth, retention cysts and enamel hypoplasia (Fig. 6) [Golan et al., 2003]. Formation and eruption of the deciduous teeth are usually normal. One suggested explanation for the delayed or non-eruption of many permanent and supernumerary teeth is the lack of cellular cementum in the apical region of impacted teeth [Manjunath et al., 2008]. While CCD patients at a younger age display relatively normal jaw proportions and morphology of the mandible, CCD patients at an older age display short lower face height, acute gonial



**Figure 6.** Cleidocranial dysplasia (CCD). **A:** Panoramic radiograph and **(B)** cone beam CT images of a 14-year-old boy with CCD showing the multiple retained primary teeth and multiple impacted permanent teeth and supernumerary teeth.

angle, anterior inclination of the mandible, and mandibular prognathism; due to maxillary hypoplasia, individuals with CCD tend to have a Class III malocclusion [Ishii et al., 1998].

Because of challenges in dental management of these individuals with CCD, comprehensive orthodontic and surgical treatment is required. Additionally, there is a wide variation in supernumerary tooth development, including asymmetrical development of supernumerary teeth in the upper and lower jaw [Soni et al., 2012]. Delay of physiologic root resorption results in prolonged retention of the primary teeth, and the eruption of the permanent teeth is delayed and many fail to erupt [Shaikh and Shusterman, 1998]. The presence of supernumerary teeth is not pathognomic for CCD; in fact, some patients may have no supernumerary teeth or even missing teeth [Richardson and Deussen, 1994].

Recent advances in dentistry, such as dental implants, allow better treatment options and outcomes for individuals with CCD. As an example, dental implants can be used not only for

orthodontic tooth movement with reduced side effects, but also for replacing teeth that cannot be brought into the arch orthodontically. With the advancements in three-dimensional imaging, Cone Beam Computed Tomography (CBCT) is now routinely used in diagnosis and treatment planning [Liu et al., 2007].

#### *Gardner syndrome*

Gardner syndrome, a variant of familial adenomatous polyposis (FAP; OMIM #175100), is a rare autosomal dominant condition characterized by gastrointestinal polyps, multiple osteomas, and skin and soft tissue tumors including a characteristic retinal lesion. Approximately 10% of FAP individuals are affected by Gardner syndrome [Ramaglia et al., 2007]. Gardner syndrome and FAP are caused by mutations in *APC* at 5q21 [Grodin et al., 1991; Kinzler et al., 1991]. *APC* is a multidomain protein that plays a major role in tumor suppression by antagonizing the WNT signaling pathway [Barth et al., 1997].

Dental anomalies are present in 30–75% of patients with Gardner syndrome, and may include impacted or unerupted teeth, hypodontia, abnormal tooth morphology, supernumerary teeth, hypercementosis, compound odontomas, dentigerous cysts, fused molar roots, long and tapered molar roots, and multiple caries [Butler et al., 2005;

---

***Dental anomalies are present in 30–75% of patients with Gardner syndrome, and may include impacted or unerupted teeth, hypodontia, abnormal tooth morphology, supernumerary teeth, hypercementosis, compound odontomas, dentigerous cysts, fused molar roots, long and tapered molar roots, and multiple caries.***

---

Madani and Madani, 2007; Basaran and Erkan, 2008]. Osteomas occur in 68–82% and are generally located in the paranasal sinuses and mandible [Dawlatly et al., 1997; Madani and Madani, 2007]. They can also affect the skull and long bones [Cankaya et al., 2012]. In the mandible, central or lobulated osteomas can be observed; central osteomas are characteristically near the roots of the teeth, and lobulated types arise from the cortex and most commonly at the mandibular angle [Wesley et al., 1987]. Often the general dentists or orthodontists are the first health care professionals to suspect the diagnosis and refer to the oromaxillofacial surgeon [Cankaya et al., 2012].

## CONCLUSION

Dental anomalies are seen as either isolated findings or in individuals with craniofacial developmental abnormalities, and in both cases they can profoundly affect the life of the affected individual. Studies of tooth development in animal models together with genetic studies of patients are improving our understanding of the causes of dental anomalies, and are laying the foundation for future biologically based treatments.

## ACKNOWLEDGMENTS

This work was supported by the NIH (DP2-OD00719 and R01-DE021420 to O.D.K.), the California Institute of Regenerative Medicine (RN2-00933 to O.D.K.), and by the Grant Agency of the Czech Republic; CZ:GA ČR: GAP305/12/1766.

## REFERENCES

Adaimy L, Chouery E, Megarbane H, Mroueh S, Delague V, Nicolas E, Belguith H, De Mazancourt P, Megarbane A. 2007. Mutation in WNT10A is associated with an autosomal recessive ectodermal dysplasia: The odonto-onycho-dermal dysplasia. *Am J Hum Genet* 81:821–828.

Ahmad W, Brancolini V, Ul Faiyaz MF, Lam H, Ul Haque S, Haider M, Maimon A, Aita VM, Owen J, Brown D, Zegarelli DJ, Ahmad M, Ott J, Christiano AM. 1998. A locus for autosomal recessive hypodontia with associated dental anomalies maps to chromosome 16q12.1. *Am J Hum Genet* 62:987–991.

Akintoye SO, Lee JS, Feimster T, Booher S, Brahim J, Kingman A, Riminucci M, Robey PG, Collins MT. 2003. Dental characteristics of fibrous dysplasia and McCune-Albright syndrome. *Oral Surg Oral Med Oral Pathol Oral Radiol Endod* 96:275–282.

Alpoz AR, Eronat C. 1997. Taurodontism in children associated with trisomy 21 syndrome. *J Clin Pediatr Dent* 22:37–39.

Al-Qattan MM. 1998. Cone-shaped epiphyses in the toes and trifurcation of the soft palate in oral-facial-digital syndrome type-i. *Br J Plast Surg* 51:476–479.

Alvesalo L, Portin P. 1969. The inheritance pattern of missing, peg-shaped, and strongly mesiodistally reduced upper lateral incisors. *Acta Odontol Scand* 27:563–575.

Andersson E, Axelsson S, Gjolstad L, Storhaug K. 2013. Taurodontism: A minor diagnostic criterion in Laurence-Moon/Bardet-Biedl syndromes. *Acta Odontol Scand*. [Epub ahead of print].

Awang MN, Siar CH. 1989. Dentigerous cyst due to mesiodens: Report of two cases. *J Ir Dent Assoc* 35:117–118.

Axelsson S, Bjornland T, Kjaer I, Heiberg A, Storhaug K. 2003. Dental characteristics in Williams syndrome: A clinical and radiographic evaluation. *Acta Odontol Scand* 61:129–136.

Barth AI, Nathke IS, Nelson WJ. 1997. Cadherins, catenins and APC protein: Interplay between cytoskeletal complexes and signaling pathways. *Curr Opin Cell Biol* 9:683–690.

Basaran G, Erkan M. 2008. One of the rarest syndromes in dentistry: Gardner syndrome. *Eur J Dent* 2:208–212.

Bei M, Maas R. 1998. FGFs and BMP4 induce both *Msx1*-independent and *Msx1*-dependent signaling pathways in early tooth development. *Development* 125: 4325–4333.

Biehs B, Hu JK, Strauli NB, Sangiorgi E, Jung H, Heber RP, Ho S, Goodwin AF, Dasen JS, Capocchi MR, Klein OD. 2013. *Bmi1* represses *Ink4a/Arf* and *hox* genes to regulate stem cells in the rodent incisor. *Nat Cell Biol* 15:846–852.

Bloch-Zupan A, Jamet X, Etard C, Laugel V, Muller J, Geoffroy V, Strauss JP, Pelletier V, Marion V, Poch O, Strahle U, Stoetzel C, Dollfus H. 2011. Homozygosity mapping and candidate prioritization identify mutations, missed by whole-exome sequencing, in *SMOC2*, causing major dental developmental defects. *Am J Hum Genet* 89:773–781.

Blumberg JE, Hylander WL, Goepf RA. 1971. Taurodontism: A biometric study. *Am J Phys Anthropol* 34:243–255.

Bohn A. 1950. Anomalies of the lateral incisor in cases of harelip and cleft palate. *Acta Odontol Scand* 9:41–59.

Borday-Birraux V, Van der heyden C, Debais-Thibaud M, Verreijdt L, Stock DW, Huyseune A, Sire JY. 2006. Expression of *Dlx* genes during the development of the zebrafish pharyngeal dentition: Evolutionary implications. *Evol Dev* 8:130–141.

Brook AH. 1974. Dental anomalies of number, form and size: Their prevalence in British schoolchildren. *J Int Assoc Dent Child* 5: 37–53.

Brook AH. 1975. Variables and criteria in prevalence studies of dental anomalies of number, form and size. *Commun Dent Oral Epidemiol* 3:288–293.

Burdick AB. 1986. Genetic epidemiology and control of genetic expression in Van der Woude syndrome. *J Craniofac Genet Dev Biol Suppl* 2:99–105.

Burzynski NJ, Escobar VH. 1983. Classification and genetics of numeric anomalies of dentition. *Birth Defects Orig Artic Ser* 19:95–106.

Butler J, Haealy C, Toner M, Flint S. 2005. Gardner's syndrome—review and report of a case. *Oral Oncol Extra* 41:89–92.

Calzavara Pinton PG, Gavazzoni R, Carlino A, Leali C. 1989. Van der Woude syndrome. *G Ital Dermatol Venereol* 124:171–173.

Cambiaghi S, Restano L, Paakkonen K, Caputo R, Kere J. 2000. Clinical findings in mosaic carriers of hypohidrotic ectodermal dysplasia. *Arch Dermatol* 136:217–224.

Cankaya AB, Erdem MA, Isler SC, Cifter M, Olgac V, Kasapoglu C, Oral CK. 2012. Oral and maxillofacial considerations in Gardner's syndrome. *Int J Med Sci* 9:137–141.

Cassia A, El-Toum S, Feki A, Megarbane A. 2004. Five mandibular incisors: An autosomal recessive trait? *Br Dent J* 197:307–309.

Childers NK, Wright JT. 1986. Dental and craniofacial anomalies of Axenfeld-Rieger syndrome. *J Oral Pathol* 15:534–539.

Clauss F, Maniere MC, Obry F, Waltmann E, Hadj-Rabia S, Bodemer C, Alembik Y, Lesot H, Schmittbuhl M. 2008. Dento-craniofacial phenotypes and underlying molecular mechanisms in hypohidrotic ectodermal dysplasia (HED): A review. *J Dent Res* 87:1089–1099.

Cobourne MT, Sharpe PT. 2010. Making up the numbers: The molecular control of mammalian dental formula. *Semin Cell Dev Biol* 21:314–324.

Cohen MMJ, Gorlin RJ. 1969. Genetic consideration in a sibship of cyclopia and clefts. *Birth Defects Orig Art Ser* 5:113–118.

Daito K. 1971. Surfaces of stone models made in elastic material impression. I. Stone model surfaces and treatment of alginate impressions. *Kokubyo Gakkai Zasshi* 38:266–274.

Darvazeh AM, Hamasha AA, Pillai K. 1998. Prevalence of taurodontism in Jordanian dental patients. *Dentomaxillofac Radiol* 27:163–165.

Das P, Hai M, Elcock C, Leal SM, Brown DT, Brook AH, Patel PI. 2003. Novel missense mutations and a 288-bp exonic insertion in *pax9* in families with autosomal dominant hypodontia. *Am J Med Genet Part A* 118A:35–42.

Dawlatly ED, Al-Qurain AA, Salih-Mahmud M. 1997. Gardner's syndrome presenting with a giant osteoma. *Ann Saudi Med* 17:542–544.

De Coster PJ, Marks LA, Martens LC, Huyseune A. 2009. Dental agenesis: Genetic and clinical perspectives. *J Oral Pathol Med* 38:1–17.

Dong J, Amor D, Aldred MJ, Gu T, Escamilla M, Maccougall M. 2005. *Dlx3* mutation associated with autosomal dominant amelogenesis imperfecta with taurodontism. *Am J Med Genet Part A* 133A:138–141.

Dressler P, Gramer E. 2006. Morphology, family history, and age at diagnosis of 26 patients

- with Axenfeld-Rieger syndrome and glaucoma or ocular hypertension. *Ophthalmology* 103:393–400.
- Dressler S, Meyer-Marcotty P, Weisschuh N, Jablonski-Momeni A, Pieper K, Gramer G, Gramer E. 2010. Dental and craniofacial anomalies associated with Axenfeld-Rieger syndrome with *pitx2* mutation. *Case Rep Med* 2010:621984.
- Eerens K, Vlietinck R, Heidbuchel K, Van Olmen A, Derom C, Willems G, Carels C. 2001. Hypodontia and tooth formation in groups of children with cleft, siblings without cleft, and nonrelated controls. *Cleft Palate Craniofac J* 38:374–378.
- El-Jaick KB, Fonseca RF, Moreira MA, Ribeiro MG, Bolognese AM, Dias SO, Pereira ET, Castilla EE, Orioli IM. 2007. Single median maxillary central incisor: New data and mutation review. *Birth Defects Res A Clin Mol Teratol* 79:573–580.
- Erpenstein H, Pfeiffer RA. 1967. Sex-linked-dominant hereditary reduction in number of teeth. *Humangenetik* 4:280–293.
- Feng J, Mantesso A, De Bari C, Nishiyama A, Sharpe PT. 2011. Dual origin of mesenchymal stem cells contributing to organ growth and repair. *Proc Natl Acad Sci USA* 108:6503–6508.
- Frazier-Bowers SA, Guo DC, Cavender A, Xue L, Evans B, King T, Milewicz D, D'souza RN. 2002. A novel mutation in human *pax9* causes molar oligodontia. *J Dent Res* 81:129–133.
- Gibson AC. 1979. Concomitant hypo-hyperodontia. *Br J Orthod* 6:101–105.
- Go W, Korzh V. 2013. Plasma membrane  $Ca^{2+}$  ATPase *Atp2b1a* regulates bone mineralization in zebrafish. *Bone* 54:48–57.
- Golan I, Baumert U, Hrala BP, Mussig D. 2003. Dentomaxillofacial variability of cleidocranial dysplasia: Clinicoradiological presentation and systematic review. *Dentomaxillofac Radiol* 32:347–354.
- Goldenberg M, Das P, Messersmith M, Stockton DW, Patel PI, D'souza RN. 2000. Clinical, radiographic, and genetic evaluation of a novel form of autosomal-dominant oligodontia. *J Dent Res* 79:1469–1475.
- Groden J, Thliveris A, Samowitz W, Carlson M, Gelbert L, Albertsen H, Joslyn G, Stevens J, Spirio L, Robertson M, et al. 1991. Identification and characterization of the familial adenomatous polyposis coli gene. *Cell* 66:589–600.
- Guttal KS, Naikmasur VG, Bhargava P, Bathi RJ. 2010. Frequency of developmental dental anomalies in the Indian population. *Eur J Dent* 4:263–269.
- Hall RK, Bankier A, Aldred MJ, Kan K, Lucas JO, Perks AG. 1997. Solitary median maxillary central incisor, short stature, choanal atresia/midnasal stenosis (SMMCI) syndrome. *Oral Surg Oral Med Oral Pathol Oral Radiol Endod* 84:651–662.
- Hansen K, Mehdiya M. 2002. Isolated soft tissue cleft lip: The influence on the nasal cavity and supernumerary laterals. *Cleft Palate Craniofac J* 39:322–326.
- Harada H, Kettunen P, Jung HS, Mustonen T, Wang YA, Thesleff I. 1999. Localization of putative stem cells in dental epithelium and their association with notch and FGF signaling. *J Cell Biol* 147:105–120.
- Harris MP, Rohner N, Schwarz H, Perathoner S, Konstantinidis P, Nusslein-Volhard C. 2008. Zebrafish *eda* and *edar* mutants reveal conserved and ancestral roles of ectodysplasin signaling in vertebrates. *PLoS Genet* 4:e1000206.
- Hart TC, Bowden DW, Bolyard J, Kula K, Hall K, Wright JT. 1997. Genetic linkage of the tricho-dento-osseous syndrome to chromosome 17q21. *Hum Mol Genet* 6:2279–2284.
- Hillebrand U, Mohr C, Plewa G. 1990. taurodontism in patients with sex chromosome anomalies. *Dtsch Z Mund Kiefer Gesichtschir* 14:187–189.
- Hogstrom A, Andersson L. 1987. Complications related to surgical removal of anterior supernumerary teeth in children. *ASDC J Dent Child* 54:341–343.
- Hovorakova M, Lesot H, Peterkova R, Peterka M. 2006. Origin of the deciduous upper lateral incisor and its clinical aspects. *J Dent Res* 85:167–171.
- Hovorakova M, Prochazka J, Lesot H, Smrckova L, Churava S, Boran T, Kozmik Z, Klein O, Peterkova R, Peterka M. 2011. Shh expression in a rudimentary tooth offers new insights into development of the mouse incisor. *J Exp Zool B Mol Dev Evol* 316:347–358.
- Howard RD. 1967. The unerupted incisor. A study of the postoperative eruptive history of incisors delayed in their eruption by supernumerary teeth. *Dent Pract Dent Rec* 17:332–341.
- Hu JC, Simmer JP. 2007. Developmental biology and genetics of dental malformations. *Orthod Craniofac Res* 10:45–52.
- Huang P, Zhu Z, Lin S, Zhang B. 2012. Reverse genetic approaches in zebrafish. *J Genet Genomics* 39:421–433.
- Hunter ML, Roberts GJ. 1998. Oral and dental anomalies in Ellis van Creveld syndrome (chondroectodermal dysplasia): Report of a case. *Int J Paediatr Dent* 8:153–157.
- Huysseune A, Van der heyden C, Sire JY. 1998. Early development of the zebrafish (*Danio rerio*) pharyngeal dentition (Teleostei, Cyprinidae). *Anat Embryol (Berl)* 198:289–305.
- Ishii K, Nielsen IL, Vargervik K. 1998. Characteristics of jaw growth in cleidocranial dysplasia. *Cleft Palate Craniofac J* 35:161–166.
- Islam M, Lurie AG, Reichenberger E. 2005. Clinical features of tricho-dento-osseous syndrome and presentation of three new cases: An addition to clinical heterogeneity. *Oral Surg Oral Med Oral Pathol Oral Radiol Endod* 100:736–742.
- Jackman WR, Draper BW, Stock DW. 2004. Fgf signaling is required for zebrafish tooth development. *Dev Biol* 274:139–157.
- Jackman WR, Davies SH, Lyons DB, Stauder CK, Denton-Schneider BR, Jowdry A, Aigler SR, Vogel SA, Stock DW. 2013. Manipulation of Fgf and Bmp signaling in teleost fishes suggests potential pathways for the evolutionary origin of multicusp teeth. *Evol Dev* 15:107–118.
- Janku P, Robinow M, Kelly T, Bralley R, Baynes A, Edgerton MT. 1980. The Van der Woude syndrome in a large kindred: Variability, penetrance, genetic risks. *Am J Med Genet* 5:117–123.
- Jarvinen S, Lehtinen L. 1981. Supernumerary and congenitally missing primary teeth in Finnish children. An epidemiologic study. *Acta Odontol Scand* 39:83–86.
- Jernvall J, Kettunen P, Karavanova I, Martin LB, Thesleff I. 1994. Evidence for the role of the enamel knot as a control center in mammalian tooth cusp formation: Non-dividing cells express growth stimulating Fgf-4 gene. *Int J Dev Biol* 38:463–469.
- Jernvall J, Aberg T, Kettunen P, Keranen S, Thesleff I. 1998. The life history of an embryonic signaling center: Bmp-4 induces p21 and is associated with apoptosis in the mouse tooth enamel knot. *Development* 125:161–169.
- Jheon AH, Seidel K, Biehs B, Klein OD. 2013. From molecules to mastication: The development and evolution of teeth. *WIREs Dev Biol* 2:165–182.
- Jorgenson RJ, Salinas CF, Shapiro SD. 1982. The prevalence of taurodontism in a select population. *J Craniofac Genet Dev Biol* 2:125–135.
- Jussila M, Thesleff I. 2012. Signaling networks regulating tooth organogenesis and regeneration, and the specification of dental mesenchymal and epithelial cell lineages. *Cold Spring Harb Perspect Biol* 4:a008425.
- Juuri E, Saito K, Ahtiainen L, Seidel K, Tummers M, Hochedlinger K, Klein OD, Thesleff I, Michon F. 2012. Sox2+ stem cells contribute to all epithelial lineages of the tooth via *sfrp5+* progenitors. *Dev Cell* 23:317–328.
- Kaloust S, Ishii K, Vargervik K. 1997. Dental development in Apert syndrome. *Cleft Palate Craniofac J* 34:117–121.
- Kantaputra PN, Limwongse C, Tocharontanaphol C, Mutirangura A, Mevatee U, Praphanphoj V. 2006. Contiguous gene syndrome of holoprosencephaly and hypotrichosis simplex: Association with an 18p11.3 deletion. *Am J Med Genet Part A* 140A:2598–2602.
- Kantor ML, Bailey CS, Burkes EJ Jr. 1988. Duplication of the premolar dentition. *Oral Surg Oral Med Oral Pathol* 66:62–64.
- Keith A. 1913. Abnormal crania-achondroplastic and acrocephalic. *J Anat Physiol* 47:189–206.
- Keranen S, Kettunen P, Aberg T, Thesleff I, Jernvall J. 1999. Gene expression patterns associated with suppression of odontogenesis in mouse and vole diastema regions. *Dev Genes Evol* 209:495–506.
- Kinzler KW, Nilbert MC, Su LK, Vogelstein B, Bryan TM, Levy DB, Smith KJ, Preisinger AC, Hedge P, Mckechnie D, et al. 1991. Identification of *fap* locus genes from chromosome 5q21. *Science* 253:661–665.
- Klein OD, Minowada G, Peterkova R, Kangas A, Yu BD, Lesot H, Peterka M, Jernvall J, Martin GR. 2006. Sprouty genes control diastema tooth development via bidirectional antagonism of epithelial-mesenchymal Fgf signaling. *Dev Cell* 11:181–190.
- Komatz Y, Tomoyoshi T, Yoshida O, Fujimoto A, Yoshitake K. 1978. Taurodontism and Klinefelter's syndrome. *J Med Genet* 15:452–454.
- Kondo S, Schutte BC, Richardson RJ, Bjork BC, Knight AS, Watanabe Y, Howard E, De Lima RL, Daack-Hirsch S, Sander A, McDonald-McGinn DM, Zackai EH, Lammer EJ, Aylsworth AS, Ardinger HH, Lidral AC, Pober BR, Moreno L, Arcos-Burgos M, Valencia C, Houdayer C, Bahuau M, Moretti-Ferreira D, Richieri-Costa A,

- Dixon MJ, Murray JC. 2002. Mutations in IRF6 cause Van der Woude and popliteal pterygium syndromes. *Nat Genet* 32:285–289.
- Kopp WK. 1967. A hereditary congenitally missing maxillary central incisor. *Oral Surg Oral Med Oral Pathol* 24:367.
- Lam AK, David DJ, Townsend GC, Anderson PJ. 2010. Van der Woude syndrome: Dentofacial features and implications for clinical practice. *Aust Dent J* 55:51–558.
- Lami F, Carli D, Ferrari P, Marini M, Alesi V, Iughetti L, Percesepe A. 2013. Holoprosencephaly: Report of four cases and genotype-phenotype correlations. *J Genet* 92:97–101.
- Lammi L, Arte S, Somer M, Jarvinen H, Lahermo P, Thesleff I, Pirinen S, Nieminen P. 2004. Mutations in AXIN2 cause familial tooth agenesis and predispose to colorectal cancer. *Am J Hum Genet* 74:1043–1050.
- Laphanasupkul P, Feng J, Mantesso A, Takada-Horisawa Y, Vidal M, Koseki H, Wang L, An Z, Miletich I, Sharpe PT. 2012. Ring1a/b polycomb proteins regulate the mesenchymal stem cell niche in continuously growing incisors. *Dev Biol* 367:140–153.
- Leck GD, Aird JC. 1984. An incomplete form of the popliteal pterygium syndrome? *Br Dent J* 157:318–319.
- Lees MM, Winter RM, Malcolm S, Saal HM, Chitty L. 1999. Popliteal pterygium syndrome: A clinical study of three families and report of linkage to the Van der Woude syndrome locus on 1q32. *J Med Genet* 36:888–892.
- Lesot H, Vonesch JL, Peterka M, Tureckova J, Peterkova R, Ruch JV. 1996. Mouse molar morphogenesis revisited by three-dimensional reconstruction. II. Spatial distribution of mitoses and apoptosis in cap to bell staged first and second upper molar teeth. *Int J Dev Biol* 40:1017–1031.
- Lexner MO, Bardow A, Bjorn-Jorgensen J, Hertz JM, Almer L, Kreiborg S. 2007. Anthropometric and cephalometric measurements in X-linked hypohidrotic ectodermal dysplasia. *Orthod Craniofac Res* 10:203–215.
- Liu JE. 1995. Characteristics of premaxillary supernumerary teeth: A survey of 112 cases. *ASDC J Dent Child* 62:262–265.
- Liu DG, Zhang WL, Zhang ZY, Wu YT, Ma XC. 2007. Three-dimensional evaluations of supernumerary teeth using cone-beam computed tomography for 487 cases. *Oral Surg Oral Med Oral Pathol Oral Radiol Endod* 103:403–411.
- Macdonald-Jankowski DS, Li TT. 1993. Taurodontism in a young adult Chinese population. *Dentomaxillofac Radiol* 22:140–144.
- Madani M, Madani F. 2007. Gardner's syndrome presenting with dental complaints. *Arch Iran Med* 10:535–539.
- Manjunath K, Kavitha B, Saraswathi TR, Sivapathasundharam B, Manikandhan R. 2008. Cementum analysis in cleidocranial dysostosis. *Indian J Dent Res* 19:253–256.
- Matalova E, Fleischmannova J, Sharpe PT, Tucker AS. 2008. Tooth agenesis: From molecular genetics to molecular dentistry. *J Dent Res* 87:617–623.
- McGraw HF, Drerup CM, Culbertson MD, Linbo T, Raible DW, Nechiporuk AV. 2011. Lef1 is required for progenitor cell identity in the zebrafish lateral line primordium. *Development* 138:3921–3930.
- Moore SR, Wilson DE, Kibble J. 2002. Sequential development of multiple supernumerary teeth in the mandibular premolar region—A radiographic case report. *Int J Paediatr Dent* 12:143–145.
- Mostowska A, Kobiela A, Biedziak B, Trzeciak WH. 2003a. Novel mutation in the paired box sequence of PAX9 gene in a sporadic form of oligodontia. *Eur J Oral Sci* 111:272–276.
- Mostowska A, Kobiela A, Trzeciak WH. 2003b. Molecular basis of non-syndromic tooth agenesis: Mutations of MSX1 and PAX9 reflect their role in patterning human dentition. *Eur J Oral Sci* 111:365–370.
- Mostowska A, Biedziak B, Trzeciak WH. 2006. A novel mutation in PAX9 causes familial form of molar oligodontia. *Eur J Hum Genet* 14:173–179.
- Nanni L, Ming JE, Du Y, Hall RK, Aldred M, Bankier A, Muenke M. 2001. Shh mutation is associated with solitary median maxillary central incisor: A study of 13 patients and review of the literature. *Am J Med Genet* 102:1–10.
- Nasman M, Forsberg CM, Dahllof G. 1997. Long-term dental development in children after treatment for malignant disease. *Eur J Orthod* 19:151–159.
- Nawa H, Oberoi S, Vargervik K. 2008. Taurodontism and Van der Woude syndrome. Is there an association? *Angle Orthod* 78:832–837.
- Neubuser A, Peters H, Balling R, Martin GR. 1997. Antagonistic interactions between FGF and BMP signaling pathways: A mechanism for positioning the sites of tooth formation. *Cell* 90:247–255.
- Ng D, Thakker N, Corcoran CM, Donnai D, Perveen R, Schneider A, Hadley DW, Tiffi C, Zhang L, Wilkie AO, Van Der Smagt JJ, Gorlin RJ, Burgess SM, Bardwell VJ, Black GC, Biesecker LG. 2004. Oculofaciocardiodental and Lenz microphthalmia syndromes result from distinct classes of mutations in BCOR. *Nat Genet* 36:411–416.
- Nieminen P, Arte S, Tanner D, Paulin L, Alaluusua S, Thesleff I, Pirinen S. 2001. Identification of a nonsense mutation in the PAX9 gene in molar oligodontia. *Eur J Hum Genet* 9:743–746.
- Oberoi S, Vargervik K. 2005a. Hypoplasia and hypodontia in Van der Woude syndrome. *Cleft Palate Craniofac J* 42:459–466.
- Oberoi S, Vargervik K. 2005b. Velocardiofacial syndrome with single central incisor. *Am J Med Genet Part A* 132A:194–197.
- Oberoi S, Winder AE, Johnston J, Vargervik K, Slavotinek AM. 2005. Case reports of oculofaciocardiodental syndrome with unusual dental findings. *Am J Med Genet Part A* 136A:275–277.
- Ohazama A, Sharpe PT. 2004. TNF signalling in tooth development. *Curr Opin Genet Dev* 14:513–519.
- Otto F, Kanegane H, Mundlos S. 2002. Mutations in the RUNX2 gene in patients with cleidocranial dysplasia. *Hum Mutat* 19:209–216.
- Ozeki H, Shirai S, Ikeda K, Ogura Y. 1999. Anomalies associated with Axenfeld-Rieger syndrome. *Graefes Arch Clin Exp Ophthalmol* 237:730–734.
- Paulsen HU, Andreasen JO, Schwartz O. 1995. Pulp and periodontal healing, root development and root resorption subsequent to transplantation and orthodontic rotation: A long-term study of autotransplanted premolars. *Am J Orthod Dentofacial Orthop* 108:630–640.
- Pawlowska E, Janik-Papis K, Poplawski T, Blasiak J, Szczepanska J. 2010. Mutations in the PAX9 gene in sporadic oligodontia. *Orthod Craniofac Res* 13:142–152.
- Peterka M, Peterkova R, Likovsky Z. 1996. Timing of exchange of the maxillary deciduous and permanent teeth in boys with three types of orofacial clefts. *Cleft Palate Craniofac J* 33:318–323.
- Peterkova R, Peterka M, Vonesch JL, Ruch JV. 1995. Contribution of 3-D computer-assisted reconstructions to the study of the initial steps of mouse odontogenesis. *Int J Dev Biol* 39:239–247.
- Peterkova R, Kristenova P, Lesot H, Lisi S, Vonesch JL, Gendault JL, Peterka M. 2002a. Different morphotypes of the tabby (eda) dentition in the mouse mandible result from a defect in the mesio-distal segmentation of dental epithelium. *Orthod Craniofac Res* 5:215–226.
- Peterkova R, Peterka M, Viriot L, Lesot H. 2002b. Development of the vestigial tooth primordia as part of mouse odontogenesis. *Connect Tissue Res* 43:120–128.
- Peterkova R, Peterka M, Lesot H. 2003. The developing mouse dentition: A new tool for apoptosis study. *Ann N Y Acad Sci* 1010:453–466.
- Peterkova R, Lesot H, Peterka M. 2006. Phylogenetic memory of developing mammalian dentition. *J Exp Zool B Mol Dev Evol* 306B:234–250.
- Peterkova R, Churava S, Lesot H, Rothova M, Prochazka J, Peterka M, Klein OD. 2009. Revitalization of a diastemal tooth primordium in *Spry2* null mice results from increased proliferation and decreased apoptosis. *J Exp Zool B Mol Dev Evol* 312B:292–308.
- Peters H, Neubuser A, Kratochwil K, Balling R. 1998. Pax9-deficient mice lack pharyngeal pouch derivatives and teeth and exhibit craniofacial and limb abnormalities. *Genes Dev* 12:2735–2747.
- Peterson SJ, Pruzansky S. 1974. Palatal anomalies in the syndromes of Apert and Crouzon. *Cleft Palate J* 11:394–403.
- Pirinen S, Kentala A, Nieminen P, Varilo T, Thesleff I, Arte S. 2001. Recessively inherited lower incisor hypodontia. *J Med Genet* 38:551–556.
- Polder BJ, Van't Hof MA, Van Der Linden FP, Kuijpers-Jagtman AM. 2004. A meta-analysis of the prevalence of dental agenesis of permanent teeth. *Commun Dent Oral Epidemiol* 32:217–226.
- Price JA, Wright JT, Walker SJ, Crawford PJ, Aldred MJ, Hart TC. 1999. Tricho-dento-osseous syndrome and amelogenesis imperfecta with taurodontism are genetically distinct conditions. *Clin Genet* 56:35–40.
- Ramaglia L, Morgese F, Filippella M, Colao A. 2007. Oral and maxillofacial manifestations of Gardner's syndrome associated with



- growth hormone deficiency: Case report and literature review. *Oral Surg Oral Med Oral Pathol Oral Radiol Endod* 103:e30–e34.
- Ranta R. 1986. A review of tooth formation in children with cleft lip/palate. *Am J Orthod Dentofacial Orthop* 90:11–18.
- Ranta R, Rintala A. 1982. Tooth anomalies associated with congenital sinuses of the lower lip and cleft lip/palate. *Angle Orthod* 52:212–221.
- Ravn JJ. 1971. Aplasia, supernumerary teeth and fused teeth in the primary dentition. An epidemiologic study. *Scand J Dent Res* 79: 1–6.
- Richardson A, Deussen FF. 1994. Facial and dental anomalies in cleidocranial dysplasia: A study of 17 cases. *Int J Paediatr Dent* 4:225–231.
- Rintala AE, Ranta R. 1981. Lower lip sinuses: I. Epidemiology, microforms and transverse sulci. *Br J Plast Surg* 34:26–30.
- Rothova M, Peterkova R, Tucker AS. 2012. Fate map of the dental mesenchyme: Dynamic development of the dental papilla and follicle. *Dev Biol* 366:244–254.
- Ruch JV. 1995. Tooth crown morphogenesis and cytodifferentiations: Candid questions and critical comments. *Connect Tissue Res* 32:1–8.
- Sarkar L, Cobourne M, Naylor S, Smalley M, Dale T, Sharpe PT. 2000. Wnt/Shh interactions regulate ectodermal boundary formation during mammalian tooth development. *Proc Natl Acad Sci USA* 97:4520–4524.
- Schalk-Van Der Weide Y, Steen WH, Bosman F. 1993. Taurodontism and length of teeth in patients with oligodontia. *J Oral Rehabil* 20:401–412.
- Scheiner MA, Sampson WJ. 1997. Supernumerary teeth: A review of the literature and four case reports. *Aust Dent J* 42:160–165.
- Schneider EL. 1973. Lip pits and congenital absence of second premolars: Varied expression of the lip pits syndrome. *J Med Genet* 10:346–349.
- Schutte BC, Sander A, Malik M, Murray JC. 1996. Refinement of the Van der Woude gene location and construction of a 3.5-mb YAC contig and STS map spanning the critical region in 1q32–q41. *Genomics* 36:507–514.
- Seidel K, Ahn CP, Lyons D, Nee A, Ting K, Brownell I, Cao T, Carano RA, Curran T, Schober M, Fuchs E, Joyner A, Martin GR, De Sauvage FJ, Klein OD. 2010. Hedgehog signaling regulates the generation of ameloblast progenitors in the continuously growing mouse incisor. *Development* 137:3753–3761.
- Seow WK, Lai PY. 1989. Association of taurodontism with hypodontia: A controlled study. *Pediatr Dent* 11:214–219.
- Shaikh R, Shusterman S. 1998. Delayed dental maturation in cleidocranial dysplasia. *ASDC J Dent Child* 65:325–329,355.
- Shapira Y, Lubit E, Kufnec MM. 1999. Congenitally missing second premolars in cleft lip and cleft palate children. *Am J Orthod Dentofacial Orthop* 115:396–400.
- Sharpe PT. 1995. Homeobox genes and orofacial development. *Connect Tissue Res* 32: 17–25.
- Shaw JC. 1928. Taurodont teeth in South African races. *J Anat* 62:476–498,471.
- Shields MB, Buckley E, Klintworth GK, Thresher R. 1985. Axenfeld-Rieger syndrome. A spectrum of developmental disorders. *Surv Ophthalmol* 29:387–409.
- Smith JD. 1969. Hyperdontia: Report of case. *J Am Dent Assoc* 79:1191–1192.
- Soni R, Vivek R, Srivastava A, Singh A, Srivastava S, Chaturvedi TP. 2012. Van der Woude syndrome associated with hypodontia: A rare clinical entity. *Case Rep Dent* 2012:283946.
- St Amand TR, Zhang Y, Semina EV, Zhao X, Hu Y, Nguyen L, Murray JC, Chen Y. 2000. Antagonistic signals between BMP4 and FGF8 define the expression of Pitx1 and Pitx2 in mouse tooth-forming anlage. *Dev Biol* 217:323–332.
- Stenvik A, Zachrisson BU, Svaton B. 1972. Taurodontism and concomitant hypodontia in siblings. *Oral Surg Oral Med Oral Pathol* 33:841–845.
- Stock DW. 2007. Zebrafish dentition in comparative context. *J Exp Zool B Mol Dev Evol* 308:523–549.
- Stockton DW, Das P, Goldenberg M, D'souza RN, Patel PI. 2000. Mutation of Pax9 is associated with oligodontia. *Nat Genet* 24:18–19.
- Tannure PN, Oliveira CaGR, Maria LC, Vierira AR, Granjeiro JM, Costa MC. 2012. Prevalence of dental anomalies in non-syndromic individuals with cleft lip and palate: A systematic review and meta-analysis. *Cleft Palate Craniofac* 49:194–200.
- Thesleff I. 2006. The genetic basis of tooth development and dental defects. *Am J Med Genet Part A* 140A:2530–2535.
- Thomas BL, Liu JK, Rubenstein JL, Sharpe PT. 2000. Independent regulation of Dlx2 expression in the epithelium and mesenchyme of the first branchial arch. *Development* 127:217–224.
- Tomona N, Smith AC, Guadagnini JP, Hart TC. 2006. Craniofacial and dental phenotype of Smith-Magenis syndrome. *Am J Med Genet Part A* 140A:2556–2561.
- Toriello HV, Franco B. 2007. Oral-facial-digital syndrome type i. Seattle, WA: University of Washington: GeneReviews.
- Tucker A, Sharpe P. 2004. The cutting-edge of mammalian development; how the embryo makes teeth. *Nat Rev Genet* 5:499–508.
- Tumer Z, Bach-Holm D. 2009. Axenfeld-Rieger syndrome and spectrum of Pitx2 and Foxc1 mutations. *Eur J Hum Genet* 17:1527–1539.
- Vahtokari A, Aberg T, Thesleff I. 1996. Apoptosis in the developing tooth: Association with an embryonic signaling center and suppression by EGF and FGF-4. *Development* 122:121–129.
- van den Boogaard MJ, Créton M, Bronkhorst Y, van der Hout A, Hennekam E, Lindhout D, Cune M, Ploos van Amstel HK. 2012. Mutations in WNT10A are present in more than half of isolated hypodontia cases. *J Med Genet* 49:327–331.
- Van der heyden C, Huysseune A. 2000. Dynamics of tooth formation and replacement in the zebrafish (*Danio rerio*) (Teleostei, Cyprinidae). *Dev Dyn* 219:486–496.
- Van der heyden C, Huysseune A, Sire JY. 2000. Development and fine structure of pharyngeal replacement teeth in juvenile zebrafish (*Danio rerio*) (Teleostei, Cyprinidae). *Cell Tissue Res* 302:205–219.
- Vastardis H. 2000. The genetics of human tooth agenesis: New discoveries for understanding dental anomalies. *Am J Orthod Dentofacial Orthop* 117:650–656.
- Vastardis H, Karimbux N, Guthua SW, Seidman JG, Seidman CE. 1996. A human MSX1 homeodomain missense mutation causes selective tooth agenesis. *Nat Genet* 13: 417–421.
- Verstraeten B, Van Hengel J, Sanders E, Van Roy F, Huysseune A. 2013. N-cadherin is required for cytodifferentiation during zebrafish odontogenesis. *J Dent Res* 92:365–370.
- Wallis D, Muenke M. 2000. Mutations in holoprosencephaly. *Hum Mutat* 16:99–108.
- Wesley RK, Cullen CL, Bloom WS. 1987. Gardner's syndrome with bilateral osteomas of coronoid process resulting in limited opening. *Pediatr Dent* 9:53–57.
- Witkop CJ. 1976. Clinical aspects of dental anomalies. *Int Dent J* 26:378–390.
- Wiweger MI, Zhao Z, Van Merkesteyn RJ, Roehl HH, Hogendoorn PC. 2012. HSPG-deficient zebrafish uncovers dental aspect of multiple osteochondromas. *PLoS One* 7: e29734.
- Wong FK, Koillinen H, Rautio J, Teh BT, Ranta R, Karsten A, Larson O, Linder-Aronson S, Huggare J, Larsson C, Kere J. 2001. Genetic heterogeneity and exclusion of a modifying locus at 17p11.2–p11.1 in Finnish families with Van der Woude syndrome. *J Med Genet* 38:198–202.
- Wright JT, Kula K, Hall K, Simmons JH, Hart TC. 1997. Analysis of the tricho-dento-osseous syndrome genotype and phenotype. *Am J Med Genet* 72:197–204.
- Yang Y, Luo L, Xu J, Zhu P, Xue W, Wang J, Li W, Wang M, Cheng K, Liu S, Tang Z, Ring BZ, Su L. 2013. Novel EDA p.Le260Ser mutation linked to non-syndromic hypodontia. *J Dent Res* 92:500–506.
- Yeh SC, Hsu TY. 1999. Endodontic treatment in taurodontism with Klinefelter's syndrome: A case report. *Oral Surg Oral Med Oral Pathol Oral Radiol Endod* 88:612–615.
- Yonezu T, Hayashi Y, Sasaki J, Machida Y. 1997. Prevalence of congenital dental anomalies of the deciduous dentition in Japanese children. *Bull Tokyo Dent Coll* 38:27–32.